

DAMPOLO PHOTOGRAPHY

Client Closet



www.dampolophotography.com



Hello there!

You've booked your session with Dampolo Photography... now the big question..

WHAT DO I WEAR?!??

Our client closet is stocked with over 20 dresses and gowns which are available to use at select sessions at no additional cost to you.

Most of our gowns are size adjustable to fit a wide range of sizes!

This guide will show you photos of each dress as well as the size range, and any other details you need to know.

Let us know which one you have your eye on!

Rachel Dampolo

Rachel Dampolo, Owner & Photographer

Our basic dresses

The Zara (orange)



This long, off the shoulder maxi dress fits sizes XS-M and is bump friendly. It has attached sleeves for a sexy off the shoulder look. It also has a knee length side slit. The color is a nice reddish / brunt orange.

The Zara (brown)



This long, off the shoulder maxi dress fits sizes M-L and is bump friendly. It has attached sleeves for a sexy off the shoulder look. It also has a knee length side slit. The color is a nice warm coffee brown..

Our basic dresses

The Savannah



This dress is a Baltic Born XS but it is extremely flexible to fit XS-M and it is bump friendly.

It's a sweet shade of pink with textured dots on it. The sleeves can be worn on or off the shoulder.

This is great for maternity and non-maternity sessions.

This dress is a Baltic Born XS wrap style dress. It is extremely flexible to fit XS-M and it is bump friendly.

It's a beautiful rust colored velvet dress with extended short sleeves.

This is great for maternity and non-maternity sessions.

The Rusty



Our basic dresses

The Chloe



This dress is available in 2 flexible sizes: Small & Medium. It is a soft yellow fabric with lots to work with!

This is a bump friendly dress that is perfect for maternity & non-maternity sessions.

This dress is a Baltic Born dress that is available in 2 bump friendly sizes. XS (fits XS-M) and M (fits M-L).

It's pale blue with a fun floral pattern and extended short sleeves.

This is great for maternity and non-maternity sessions.

The Courtney



Our basic dresses

The Kate



This is a Baltic Born dress in a size S that will fit most XS-M and is bump friendly.

It has beautiful lacey details and a scalloped off the shoulder top.

This is perfect for maternity and non-maternity sessions.

The Manuela



This open belly maternity dress is available in 2 very flexible sizes: XS/S and M/L.

It has a completely open belly and can be worn with your own undergarments, lingerie, or bathing suit bottoms.

Perfect for those summer maternity sessions!

Our Specialty Dresses

The Venus



This is a sheer gold gown with stunning constellation details. Lots of beaded stars & moons & beaded sleeves. It has a low V back and a V neckline.

This can be worn with your own nude bodysuit or a provided white slip dress.

This is size adjustable to fit sizes 0-12 & is bump friendly.

The Ashlyn Crown was made to accompany it and is also available (see Crown page for a closer look).

The White Star



This is a sheer white gown with glittery star details.

It has a long beautiful train and loose sleeves. It has a high neck line and a very low V back.

This fits sizes 4-8 and can be worn with the provided nude slip dress, or a white dress of your own.

The Elsa crown was made to accompany this dress and is also available (see Crown page).

Our Specialty Dresses

The Bella



This is a gorgeously neutral fabric dress that has a very organic look and feel.

It's flexible to fit sizes XS-XXL and has a lot of dress to work with. It has slits on either side, and sleeves that can be worn on or off the shoulder.

This is bump friendly and is perfect for any maternity or non-maternity session.

The Sage



This is a silky, long, luxurious gown with lots of train to work with.

This is flexible to fit sizes 2-18. It can be worn on or off the shoulders.

This is perfect for maternity and non-maternity sessions.

Our Tulle Dresses

The Peach



This is very long and elegant peach colored tulle gown.

It has an adjustable waist and adjustable sleeves to fit sizes 0-14.

It is bump friendly and perfect for maternity and non-maternity sessions.

The Lexie Crown accompanies this dress well (see Crown page).

The Elyse



This is a robe style dress that fits most sizes.

It can be worn open as a robe or closed with the provided sash.

It has lots of layers of pink tulle on the train and the sleeves. It can be worn with your own bodysuit or lingerie.

The Lexie Crown pairs well with this dress.

Our Tulle Dresses

The Rosie



This is a sheer pink tulle dress that fits most sizes.

It's a one shoulder dress with puffy tulle on the right shoulder.

It's completely sheer and can be worn with a bodysuit or undergarments of your own.

Works for maternity & non-maternity sessions.

The Camila



This dress is size specific to fit sizes 6-8

It's layers and layers of beautiful mauve tulle!

It has a big train that's fun for lots of motion.

This is slightly bump friendly, but is not recommended for maternity sessions with a full bump.

Our Tulle Dresses

The Belle



This is a beautiful yellow dress with pearl details from head to toe.

It has a nice big train and button up cuffs on the sleeves.

This is size adjustable to fit sizes 0-8

It is bump friendly and perfect for maternity and non-maternity sessions.

This dress is similar to the Belle, big and beautiful in a pale green shade with pearl details.

This fits sizes 2-16 with an adjustable corset back.

It is bump friendly but it's a heavy dress so it would not be recommended for maternity sessions.

The Ivy



Our Tulle Dresses

The Claire



This dress is flexible to fit sizes XS-XL and is bump friendly.

It is a sheer champagne color with gold dots from head to toe. It has a beautiful long train to work with.

It can be worn with a slip dress (not provided) or bodysuit or undergarments of your own (strapless is recommended).

This dress is simply stunning. It has a big open front that can be posed in a way to appear closed or open.

This is size adjustable to fit sizes 2-14 and it has loose tulle sleeves and a long beautiful train.

This can be worn with a bodysuit or undergarments of your own (strapless is recommended).

Perfect for maternity & non-maternity sessions.

The Madison



Our Tulle Dresses

The Lavender Haze



This cute little tea length dress is size specific to fit sizes 0-4.

It has layers of tulle and is great for lots of fun motion.

It has loose tulle sleeves that can be worn on or off the shoulders.

This is a tiny dress and is not recommended for maternity sessions.

The Phoenix



This dress is absolutely humongous and has layers upon layers of tulle and a big, long train.

It is size adjustable to fit sizes 2-12 and is bump friendly.

The corset is missing a loop and there is a slight rip in the tulle which may not be visible in photos.

This dress is recommended to rent by photographers for styled shoots and not for every day use. \$50+ add on fee for client rental due to time intensive preparation.

Our Tulle Dresses

The Black Pearl



This black robe style dress fits most sizes.

It is sheer black with layers of tulle and pearl details from head to toe.

It can be worn with a black slip/dress (not provided), bodysuit, or undergarments of your own.

It is perfect for maternity and non-maternity sessions.

This fun robe style dress fits most sizes.

It is sheer with multicolored dots from head to toe. It can be worn with a nude or white slip dress, or bodysuit or undergarments of your own.

Perfect for maternity & non-maternity sessions.

The Confetti Dress



Our Boho Dresses

The Kimana



This lace boho beauty is very delicate and light.

The name, meaning butterfly, was given because of the long and flowy butterfly sleeves.

It is shorter on the sides to have slit space, and is flexible to fit XS-XL.

This is perfect for maternity and non-maternity sessions.

The Magnolia



This beautiful dress has a nude under layer topped with a layer of lace.

It has an adjustable waist to fit sizes 8-14.

The waist line for this dress is mid-waist so this may not be suitable for some maternity sessions.

A rose gold belt is also available to wear with this dress.

Our Crowns

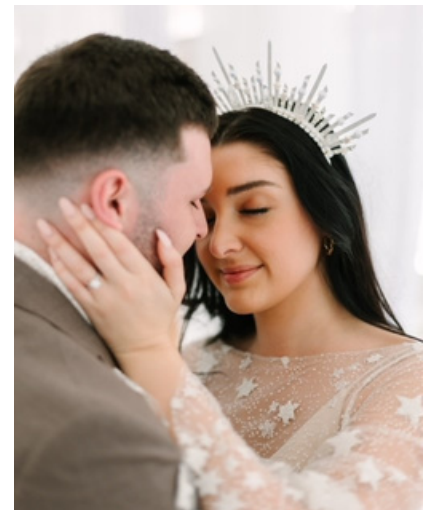
The Ashlyn Crown



This piece was made for us by Shop Brass Moon to match our Venus dress.

It's a halo style crown with gold constellation details.

The Elsa Crown



This piece was made for us by Shop Brass Moon to match our White Star dress.

It's a halo style crown with white star & pearl details.

The Lexie Crown



This piece is pink with crystal, floral and rose gold metal details.

It matches well with any of our white or pink dresses, especially Peach & Elyse!